

BINGO

Rehab Pushchair



HOGGI[®] - partnering to mobilize kids

Innovative features

Rehab pushchairs are an important part of the care of disabled children. There is, at present a broad range of innovative solutions available.

BINGO however, sets new standards!

- **MDS – Multi directional Suspension System**

A guiding innovation in the field of pushchairs, MDS absorbs bumps from the ground, allowing the frame to be flexible in all directions, even diagonally which is especially effective off road or on rough terrain.

In addition to this, MDS is very easy to adjust allowing you to simply modify the pushchair to fit the specific needs of your child. Spasm producing bumps are effectively prevented.

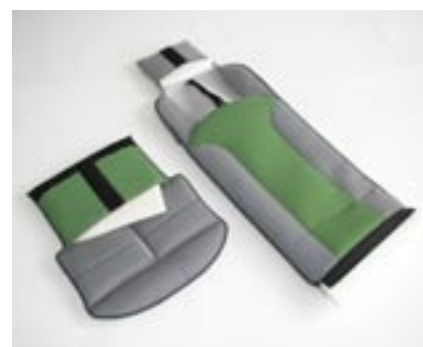


- **MDS protects your child!**

- **IUS – Individual Upholstery System**

Removable foam cushions in the seat, back and head areas and lateral supports allow easy customisation of the seating position.

IUS is also the foundation for the newly developed AIRFLEX-KID System. An air cushion system comprising of several air chambers connected to each other providing the option of exact positioning or dynamic seating for your child.



- **45° Tilt**

The special construction of the tilt mechanism allows a 45° tilt without compromising the overall stability.



- **Incredibly short folding package by patent-folding mechanism**

In comparison to other rehab pushchairs BINGO, when folded is 10-15cm shorter than its competitors – A quantum leap in the world of the car boot!

An extraordinarily simple system of slides and levers ensures that the handle bar does not go beyond the front frame.

In addition, the large wheels provide a comfortable ride and are easy to detach by quick release.



Variations and colors

Mobility bases



3202-1000 mobility base size 1, sw. front wheels
3204-1000 mobility base size 2, sw. front wheels



3201-1000 mobility base size 1, rigid front wheels
3203-1000 mobility base size 2, rigid front wheels

Upholstery and frame colors



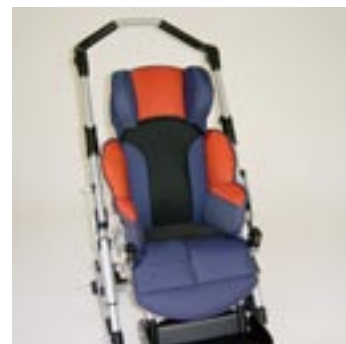
frame - silver metallic
upholstery - green / blue



frame - silver metallic
upholstery - green / blue
with spacer fabric



frame - silver metallic
upholstery - red / blue



frame - silver metallic
upholstery - red / blue
with spacer fabric



frame - black
upholstery - red / grey



frame - black
upholstery - red / grey
with spacer fabric



frame - black
upholstery - green / grey



frame - black
upholstery - green / grey
with spacer fabric

HOGGI[®] - partnering to mobilize kids

Accessories



swivel lock



storage bag folding



footrest angle adjustable with footrest lock



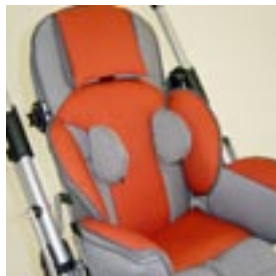
Airflex Kid-System



Airflex Kid-System-for lateral upholstery



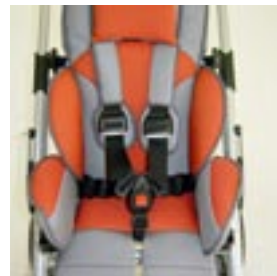
headrest pads



trunk supports



lab belt



five-point harness



foot straps



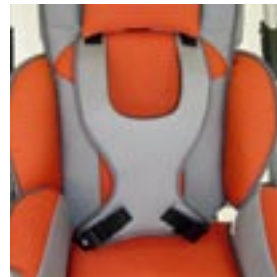
frame pad



groin strap



fixation jacket



chest-shoulder harness



abduction block



grasp rail with upholstery



therapy tray



winter warmer

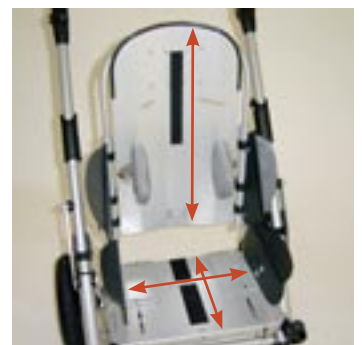


rain cape



canopy with rain cover

Adjustment possibilities



HOGGI[®] - partnering to mobilize kids

Technical data

Basic components:

BINGO mobility base

- Aluminium frame with patent-folding mechanism
- 45° tilt in space
- ergonomic, push handle height adjustable
- multi directional suspension system (MDS)

BINGO seat unit

- adjustable seat depth, seat width, backrest height and lower leg length
- adjustable recline and knee angle
- angle adjustable foot bed
- individual upholstery system (IUS)

Dimensions cm (inches) and weight kg (lb) Size 1

Size 2

Mobility base	3201-1000 rigid fr. wheels 3202-1000 sw. fr. wheels	3203-1000 rigid fr. wheels 3204-1000 sw. fr. wheels
Height push handle	77 -112 (30-44)	77 - 112 (30-44)
Overall width	63 (25)	68 (26.5)
Overall length mobility base rigid fr. wheels	97 (38)	97 (38)
Overall length mobility base sw. fr. wheels	93 (36.6)	93 (36.6)
Wheel diameter front	25 / 19 (9.8 / 7.5)	25 / 19 (9.8 / 7.5)
Wheel diameter rear	25 (9.8)	25 (9.8)
Tilt in space	-45° to +45°	-45° to +45°
Folding size mob.base rig. fr. wh. with wheels	84x63x36 (33x25x14)	84x68x36 (33x26.5x14)
Folding size mob.base rig. fr. wh.without wheels	77x63x23 (30x25x9)	77x68x23 (30x26.5x9)
Folding size mob.base sw. fr.wh. with wheels	83x63x36 (32.6x25x14)	83x68x36 (32.6x26.5x14)
Folding size mob.base sw.fr.wh.without r.wheels	77x63x31 (30x25x12)	77x68x31 (30x26.5x12)
weight	8 kg / 8,5 kg (17.6 / 18.7)	9 kg / 9,5 kg (19.8 / 20.9)
Load capacity mobility base	50 kg (110)	50 kg (110)
Turning radius	128 (50)	138 (54)

Seat unit

3201-2000

3203-2000

Seat depth	16 - 30 (6.3 - 11.8)	21 - 40 (8.2 - 15.7)
Seat width	18 - 30 (7 - 11.8)	23 - 35 (9 - 13.7)
Lower leg length	16 - 34 (6.3 - 13.4)	16 - 39 (6.3 - 15.4)
Backrest height	45 - 63 (17.7 - 25)	54 - 75 (21 - 29.5)
Height of slots for shoulder straps	28 - 46 (11 - 18)	34 - 55 (13 - 21.5)
Recline	80° to 180°	80° to 180°
Weight	7 kg (15.4)	8,5 kg (18.7)
Load capacity seat unit	35 kg (77)	35 (77)

BINGO - the enduring road runner

The durability of rehab pushchairs must be proved according to DIN EN 12183 by the so called „Two-Drum-Test“. The prescribed number of cycles is 200.000.

BINGO passed half a million cycles without any damages and with entire functionality.

HOGGI® - partnering to mobilize kids